

WORKshop

issue 04
www.choisgallery.com

creative
commercial space
+ concept





VIP WING MUNICH AIRPORT

_Erich Gassmann | Tina Aßmann

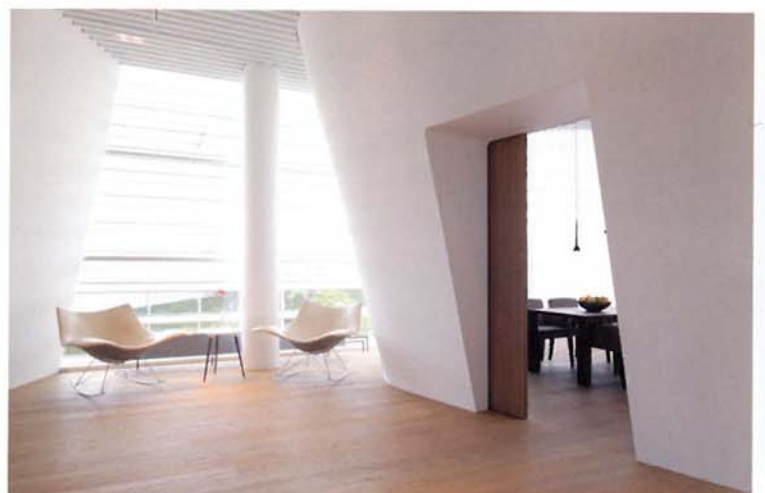
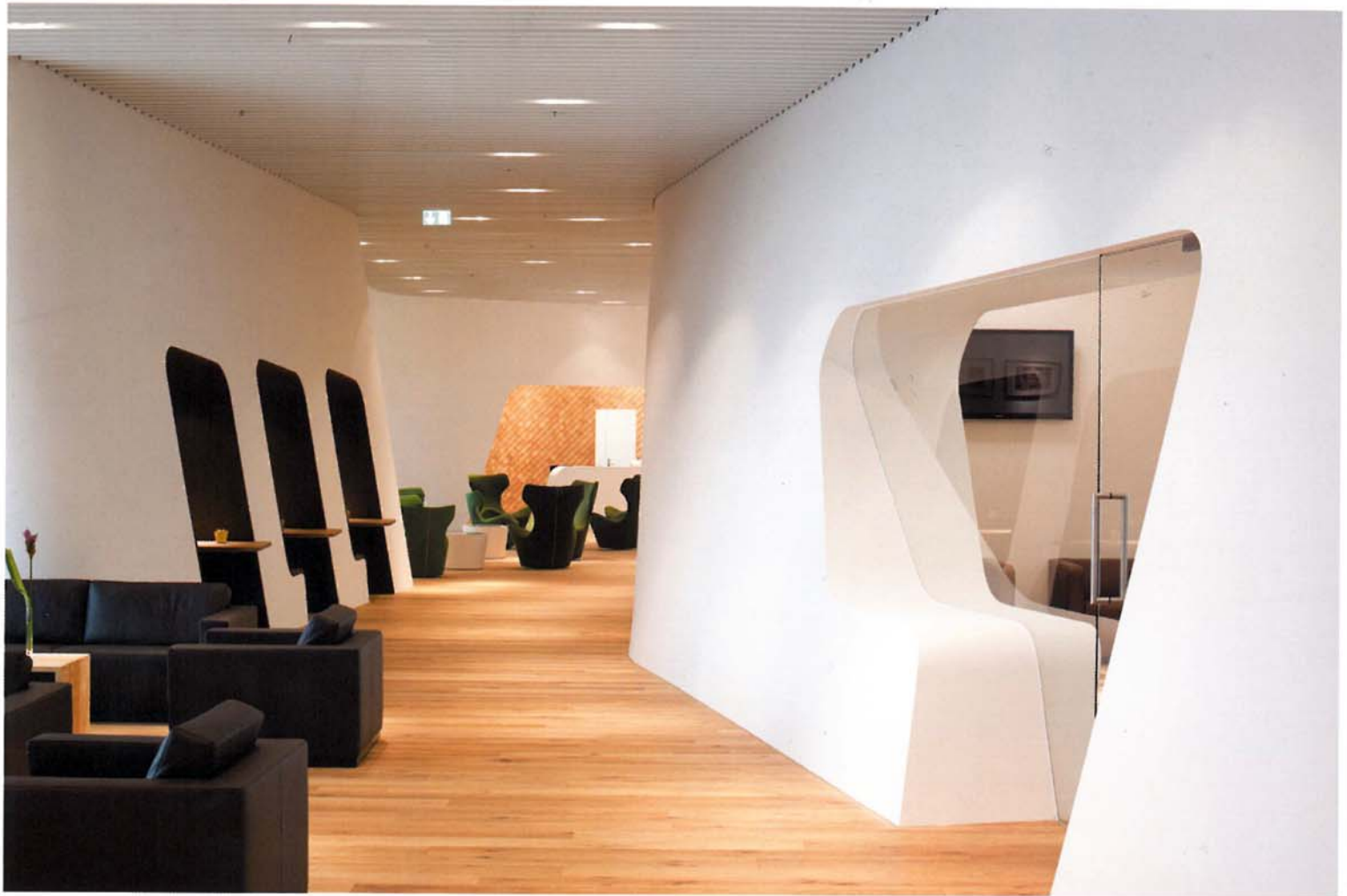
The VIP lounge is a modern implementation of a special identity, skillfully uniting progress and tradition. It can be experienced with all the senses: haptically – in the use of native woods, typical Bavarian materials such as loden, felt, leather, and broad oak planks; visually – with maximum use of daylight, selective views of the famous white and blue Bavarian sky, and the proposed beer garden. This is an island of peace and tranquility in the turbulent working day, a snatch of holiday between appointments, a perfect oasis equipped with the latest technology, international flair with a Bavarian accent.

In the south wing of Terminal 1, guests have 1,200m² at their disposal, consisting of four separately usable suites, a central lounge area with gastronomy, business corner, and separate workrooms, rest area,

showers and changing facilities, an interdenominational prayer room, as well as a smoking corner.

The room conveys a feeling of the alpine mountain world. The falling and rising room recesses determine the conception of the room. The requirements on material and workmanship are manifested at different levels – from the oak-clad doors with their hand-finished brass fittings, the solid wooden tables carved from a tree trunk, to the sensual experience of the fragrant Swiss pine in the relaxation room.

The primary way from the entrée leads to the bar and a casually furnished area with a bench. The casual furnishing in fresh shades of green corresponds with the wool-covered bench and the elegant copper cladding of the rear wall of the bar.



Comfortable leather sofas and armchairs in the second lounge also invite the traveller to linger awhile. Even from the smoking corner opposite, the large glass window provides a view of the runways. Hand-finished tables of solid ash with finger joints represent Bavarian craftsmanship. But the lounge offers not just relaxation: the Schloss Neuschwanstein Conference Suite provides meeting facilities for up to ten people. Under the slogan 'Laptop und Lederhose', alpine motifs such as the solid split-wood wall cladding are combined with the latest conference technology. Those looking for a more dignified ambience for a meeting or a business dinner will feel at home in the Schloss Schleissheim Suite. This is connected to the

Schloss Neuschwanstein Conference Suite by a concealed door and is flooded with light, providing an ideal supplement to the formal meeting. The wall linings of fine velvet, room-high semitransparent curtains, and furniture of oiled walnut, leather and textiles, and Bavarian accessories such as a set of real deer antlers, ensure a cosy, warm atmosphere. The corrugated lamella ceiling (with an individual design in every suite) emulates the typical, gentle Bavarian hill landscape. The Schloss Linderhof Suite contrasts with a private bathroom, lounge and working area. Organic forms of free furnishing and illumination, and the floral wall lining of velvet in strong shades of pink, contrast with the historical portraits of the royal family. The generous-sized VIP bathrooms are wellbeing for

the soul. Selected materials and colours in the various sanitary areas ensure the necessary dose of relaxation during a travel break. In the ladies' bathroom, for example, a freestanding, oval, conical washstand grows out of the floor as the centre point of the room. The fine pattern of mosaic tiles in a variation of aubergine shades covers the furnishings and is continued on the floor and walls. A surrounding strip of mirrors optically enlarges the room and is loosened up by the circular, three-dimensional 'light bubbles'. The spirit of King Ludwig II is everywhere. Even in the men's bathroom, the King can be seen in an oil portrait, hunting astride a horse. <

